

Web Browser Based “Zero U” Power Control

Control Power on Any AC Powered Device . . . Via Web Browser, Telnet, Modem or Local Terminal!

Applications:

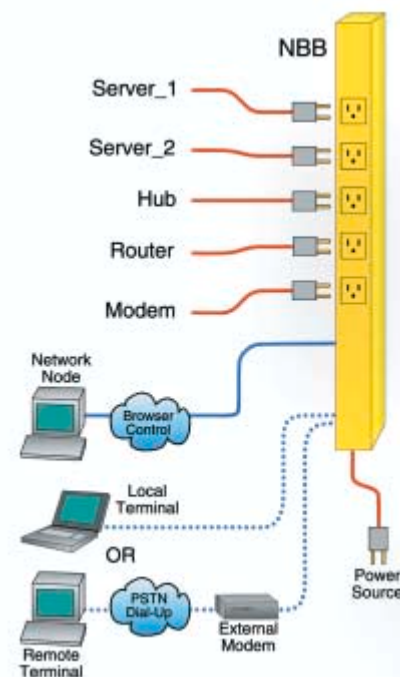
- Remote Power Management and Control
- Reboot Servers, Routers, Web Cams, Firewalls and Other Remote Devices

Features:

- Web Browser Access for Easy Setup and Operation
- Encrypted Password Security
- Five (5) Individual Outlets
- Each Outlet can Switch a 15 Amp Load
- On / Off / Reboot Switching
- IP Addressed, 10 Base-T Interface
- RS232 Modem / Console Port
- Network Security Features
- Power-up Sequencing



Servers, routers, and other electronic equipment sometimes “lock-up,” often requiring a service call to a remote site just to flip the power switch to perform a simple reboot. The NBB-115 Network Boot Bar gives you the ability to perform this function from anywhere, just point your browser to the NBB-115’s IP address, enter the secure password, and you’re just a click away from remote power control.



NBB-115 Network Boot Bar

Two Convenient User Interfaces

The NBB-115 provides two convenient methods for accessing configuration and switching functions; The Web Browser Interface and the Command Line Interface. The Web Browser Interface consists of a series of simple, easy-to-use web page menus that allow you to select configuration parameters or initiate switching operations using your TCP/IP network and a Java Script enabled web browser. The Command Line Interface is an ASCII command line menu system, which allows you to configure and operate the NBB-115 via Telnet over TCP/IP network, via modem connection or via local PC using a terminal program such as Hyperterminal or TeraTerm

Security Features

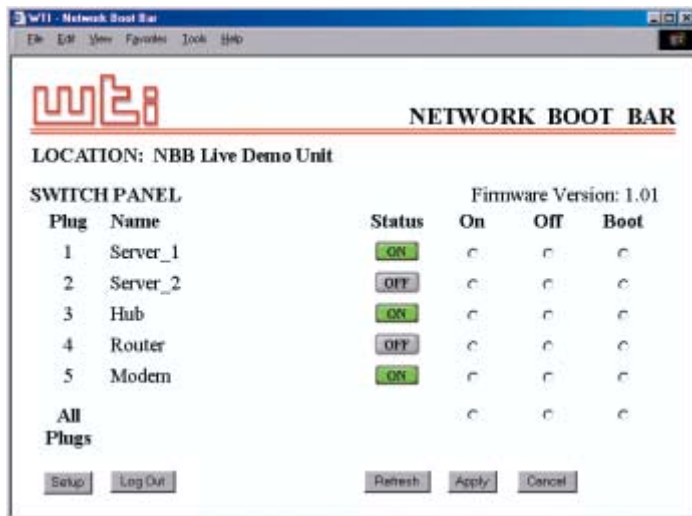
Access to the NBB-115 command mode is password protected to prevent unauthorized users from gaining access to sensitive switching and configuration functions. Both the Web Browser Interface and Command Line Interface require the user to enter a password before allowing access. Passwords transmitted via web browser, use basic 64 bit encryption techniques to ensure that passwords remain protected, and access to your equipment remains secure. Telnet Control can be defined to a discrete TCP port, or turned off to ensure that no unprotected port is present.

Easy to Configure, Easy to Use

The NBB features two different levels of operational passwords: the System Administrator Level and the User Level. The System Level provides access to all configuration and switching functions, while the User Level is limited to switching functions only.

Easy to use commands let you assign Plug names, set system parameters and view plug status. Outlets can be switched On, Off or Booted using plug numbers or names. For Power Sequencing, each plug can be assigned a power-up time and will wait for the selected duration before turning on the next plug.

Web Browser Interface



Specifications

Power Input/Output: NBB-115 (115VAC)

AC Inputs: 15 Amps Max

Voltage: 105 - 120 VAC, 60 Hz

Connector: IEC-320 Inlet, Line Cord Supplied

AC Outputs: Five (5) 15 Amps Max

Connector: NEMA 5-15 Outlets

Load: 15 Amps Total

Console/Modem Port Interface:

Connector: DB9M, RS232C, DTE

Coding: Serial ASCII, 8 Bits, No Parity

Physical / Environmental:

Size:

Length: 21.25" (54.0 cm)

Depth: 3.00" (7.6 cm)

Width: 1.75" (4.5 cm)

Weight: 6 Lbs. Shipping Weight

Operating

Temperature: 32°F to 122°F (0c to 50c)

Humidity: 10 - 90% RH



western telematic incorporated

5 Sterling • Irvine • California 92618-2517

TOLL FREE (800) 854-7226

TEL (949) 586-9950

FAX (949) 583-9514

EMAIL info@wti.com

WEB www.wti.com

© Copyright 2003 Western Telematic, Incorporated
NetReach is a trademark of
Western Telematic, Incorporated