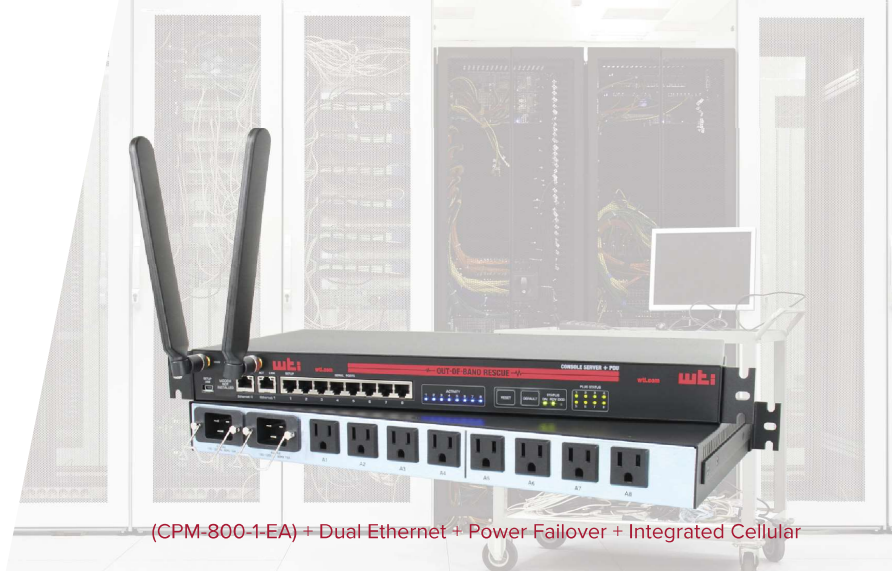




WE HELP THE NET...WORK!

CONSOLE SERVER + PDU HYBRID CPM SERIES



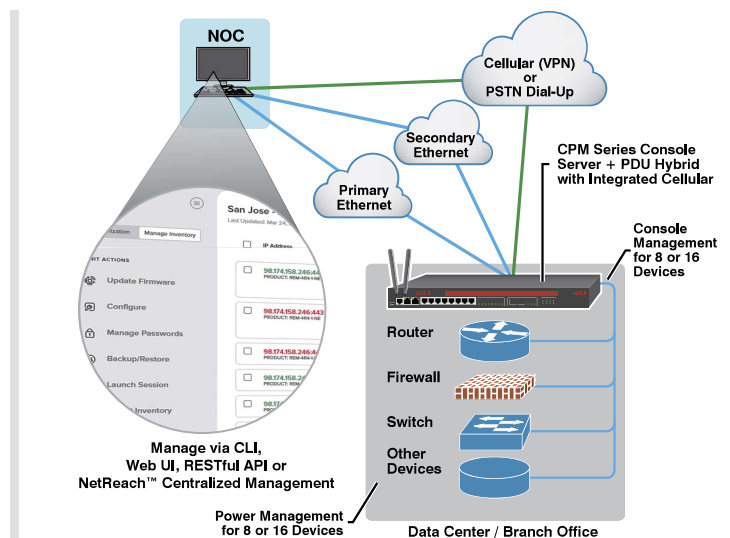
(CPM-800-1-EA) + Dual Ethernet + Power Failover + Integrated Cellular

Out-of-Band Console Access + Power Control + ATS

The CPM Series is a comprehensive Out-of-Band Rescue™ solution, including all of the remote network management tools you need in a single convenient device.

When your network is unresponsive, the CPM allows you to access, troubleshoot and restore network services via secure sessions over multiple connectivity options. SSH to console ports and reconfigure your mission critical devices as well as remotely control power on individual outlets. The CPM Series offers lights out management of your LAN/WAN infrastructure, providing event monitoring, logging and alarms.

The CPM can be globally deployed and managed as a stand alone unit or as a complete automation based enterprise Out-of-Band Rescue™ solution.



IP-to-Serial Console Management:

- 8 or 16 RS232 RJ45 Serial Console Ports
- Ctrl+Break Command Block Options
- Reverse/Outbound SSH

Remote Power Management:

- 8 or 16 Switchable NEMA 5-15R or IEC C13 Outlets
- Dual 20 Amp Power Supplies
- (Four 20 Amp Power Supplies on CPM-1600 Models)
- **Optional** Automatic Transfer Switch (ATS) For Failsafe Power
- **Optional** Per Outlet Current Metering & Alarming
- On/Off/Reboot/Default/Load Shed Switching
- Outlet Sequencing & Power Up Delays
- Scheduled Outlet Switching/Reboot
- Ping Watchdog with Auto Reboot
- 120 VAC and 240 VAC Models

Security & Authentication:

- HTTPS, SSHv2, SNMPv3
- Transport Layer Security (TLS) v1.2, v1.3
- IPsec [Server/Client] & OpenVPN
- IPTables / Static Routes
- Supports Duo, RSA, Okta & Azure Multi-Factor Authentication
- SAN Certificate Support
- AAA: LDAP/Active Directory/Kerberos/RADIUS/TACACS+
- Embedded Validated FIPS 140-2 Cryptographic Module
- Port-Specific Password Protection
- Invalid Access Lockout & Alarm

In-Band/Out-of-Band Access:

- Primary Ethernet: 10/100/1000
- **Optional** Secondary Ethernet with Fallback Capabilities: 10/100/1000
- **Optional** 56k v.92 Modem with Dialback Security
- **Optional** 4G LTE Cellular with Wake-Up on Failure
- **Optional** Always On with Failsafe Dual Power Supplies
- IP Passthrough for Cellular WAN Failover
- Local Access (RJ45 RS232 & USB Mini Set-up Ports)
- Supports IPv4 and IPv6

Unit Management:

- Compatible with WTI Centralized Management Software
- CLI & HTML5 Web-Based GUI
- SNMP & Full MIB Support
- FTP/TFTP/SFTP/SCP
- DHCP/DNS/DDNS
- NTP for True Server Sync
- Multiple Concurrent SSHv2 Sessions

DevOps Automation:

- RESTful Web Services API
- Ansible Galaxy Collections Support
- SYSLOG & Streaming Telemetry Support
- WebHook Support (Slack/Splunk/WebEx)
- Zero Touch Provisioning (ZTP) Support

wti.com/hybrids



DOWNLOAD
SPEC SHEET



WATCH
THE DEMO

CONSOLE SERVER + PDU HYBRID CPM SERIES

Model Number	Outlets	RS232 Ports	AC Voltage 50/60 Hz	Power Dist. (80% Derated)	Input Feeds	Power Cord (Detachable)	Optional Add-On Features				
							Dual Ethernet	Dial-Up Modem	4G LTE Cellular	ATS	Current Metering
CPM-800-1	(8) NEMA 5-15R	8	100/120V	3.2/3.8 kW	(2) 20 Amp	C19 to NEMA 5-15P, 8'	10/100/1000	v.92	4G LTE	Yes*	Yes
CPM-800-2	(8) IEC 60320 C13	8	100/240V**	3.2/7.6 kW	(2) 20 Amp	(Sold Separately)	10/100/1000	v.92	4G LTE	Yes*	Yes
CPM-1600-1	(16) NEMA 5-15R	16	100/120V	6.4/7.6 kW	(4) 20 Amp	C19 to NEMA 5-15P, 8'	10/100/1000	v.92	4G LTE	Yes*	Yes
CPM-1600-2	(16) IEC 60320 C13	16	100/240V**	6.4/15.3 kW	(4) 20 Amp	(Sold Separately)	10/100/1000	v.92	4G LTE	Yes*	Yes

* ATS feature requires each input to be loaded no more than 50% capacity of total Power Distribution

** 200/240V AC power supply with ATS Optional Add-on

Model Number Key		Sample Model Number: CPM 800 1 ECAM		
Series				
CPM		Console Server + PDU Combo		
Ports/Outlets				
800	8 Ports/8 Outlets	1600	16 Ports/16 Outlets	
Outlet Type				
1	NEMA 5-15R	2	IEC 60320 C13	
Add-On Features				
E	Dual Ethernet/Dual Power	C	Current Metering	
A	Automatic Transfer Switch	M	Dial-Up Modem	
4G LTE Cellular Requires Additional W4G-VZW, W4G-ATT or W4G-EUA Part No.				

Event Monitoring, Logging & Notification:

- Alarms via SNMP, Email or Text Message
- Over-Temperature Alarms
- Ping-No-Answer Alarm (Failed Ping Command)
- Power Cycle & Lost Voltage Alarms
- Temperature, Command & Event Logging
- Buffer Monitoring & Alarms
- No Dialtone & Lost Communication Alarms
- Time Stamp & Non-Connect Port Buffering



Ethernet Port(s):	10/100/1000 BaseT, RJ45
Internal Modem Option:	56K v.92 Internal Modem with Dialback Security
Internal Cellular Option:	4G LTE for Verizon, AT&T, T-Mobile or EU
Operating Temperature:	32°F - 140°F (0°C - 60°C)
Humidity:	10 - 90% RH
CPM-800 Dimensions:	Height: 1.75" (4.4 cm), 1 Rack U Width: 17.15" (43.6 cm) Depth: 8.7" (22.1 cm)
CPM-1600 Dimensions:	Height: 3.5" (8.9 cm), 2 Rack U Width: 17.15" (43.6 cm) Depth: 12.5" (31.8 cm)
Shipping Weight:	
CPM-800 Series:	10 Lbs (4.5 Kgs)
CPM-1600 Series:	22 Lbs. (10 Kgs)
Mounting:	19" Rack Brackets Included
Approvals:	UL, cUL, CE, FCC Class A



- 5 Year Warranty
- Stocked for Same Day Shipments
- In-House Design & Manufacturing
- Made In USA



info@wti.com ■ wti.com/hybrids

WTI - Western Telematic, Inc.
5 Sterling, Irvine CA 92618 USA
© Copyright 2023 Western Telematic, Inc. - CPM20230501



DOWNLOAD
SPEC SHEET



WATCH
THE DEMO