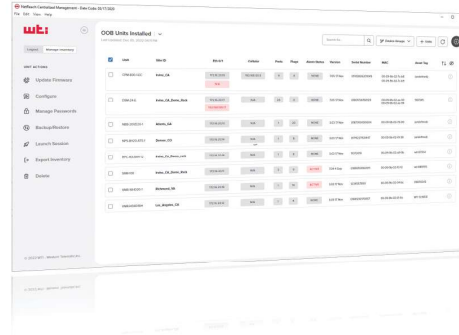




WE HELP THE NET...WORK!



NetReach v1.02

NetReach™

Centralized Management For WTI Out-of-Band Solutions

NetReach Centralized Management allows network admins to access, control and manage WTI out-of-band network deployments across secure connections via a single, centralized interface.

When network connectivity is lost, WTI Out-of-Band connections via primary or secondary Ethernet and Cellular are visible and easily accessible for quick remediation of network issues.

Updating WTI firmware & configs, changing usernames & passwords, locating & troubleshooting network devices is made easy...even when the network is down!

Multi-device Management

- Easily Discover & Manage WTI Devices on Your Network
- Update Firmware to all or Select Units
- Configure all or Select Units
- Create/Edit Usernames & Passwords
- Backup/Restore Configurations
- View Alarm Status Across all Units
- Group WTI Devices by Location, Function or other Criteria
- Audit Log Records Events and User Activity

Accessibility & Control

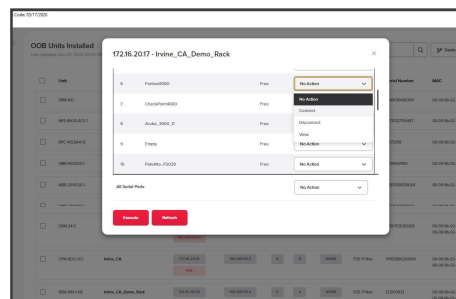
- Search all devices on your Out-of-Band Network
- View Available Connectivity Options During an Outage
- Launch Web & SSH Sessions via LAN or 4G LTE Cellular
- Reboot Power on Locked Devices
- Access Console Ports Across Your Network
- Identify Units, Ports, Outlets & Groups
- Export Management Data

Desktop & Server Requirements

- Windows 10 (64-bit x86) or later
- MacOS Sierra (10.12) or later
- Supports Multiple Users
- Shared Database
- Supports AWS S3 Cloud Storage Service

Key Features:

- **Update Firmware:** Admins can search and select WTI units from inventory, specify the desired firmware and NetReach will do the rest, updating all selected units on your out-of-band network.
- **Reboot Network Devices:** On/Off/Reboot power to all your network devices connected to WTI PDU's using a single interface.
- **Access Console Ports:** Quickly SSH to any console port on your routers, switches, firewalls and other network devices.
- **Create/Edit Usernames and Passwords:** Update user account information on multiple WTI units from a single, convenient interface.
- **Search:** Easily search for devices connected to your out-of-band network for quick identification and remediation during failures. Search by IP, unit name, connected device, site ID, serial number, MAC address, asset tag or firmware version.



Console Port Access via Cellular



DOWNLOAD SPEC SHEET



WATCH THE DEMO