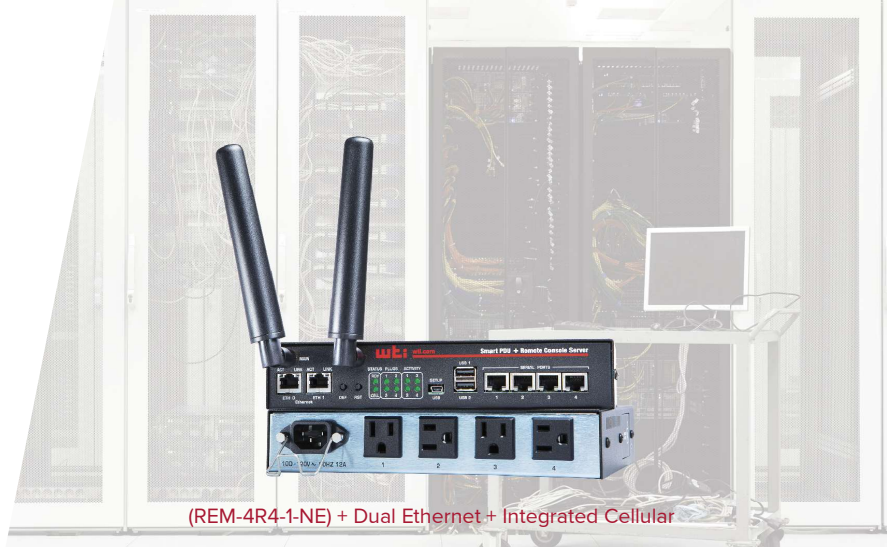




WE HELP THE NET...WORK!

## REMOTE EDGE MANAGER REM SERIES



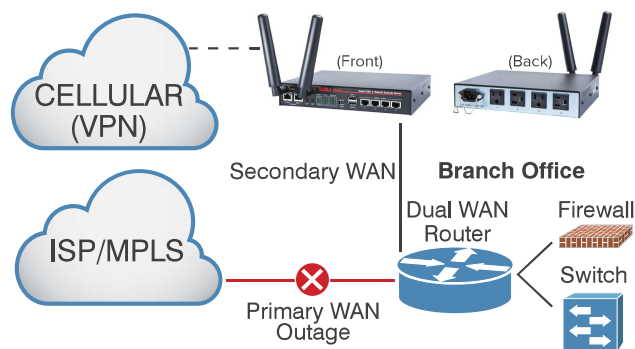
(REM-4R4-1-NE) + Dual Ethernet + Integrated Cellular

# Out-of-Band Management For Edge Networks

The REM is a compact and comprehensive Out-of-Band Rescue™ solution for WAN edge and branch offices.

Designed for small racks and enclosures, the REM delivers all the benefits of a next-gen console server and intelligent PDU with backup LAN/WAN connectivity over 4G LTE cellular and dual gigabit ethernet.

When IT infrastructure and services become unresponsive, the REM allows you to quickly access, troubleshoot and restore connections without a truck roll. Better yet, with WTI OOB automation features you can proactively monitor and remediate issues for always-available resilient networks.



### In-Band/Out-of-Band Connectivity:

- Primary Ethernet: 10/100/1000
- **Optional** Secondary Ethernet with Fallback Capabilities: 10/100/1000
- **Optional** 4G LTE Cellular with Wake-Up on Failure
- IP Passthrough for Cellular WAN Failover
- Local Access (USB Mini Set-up Ports)
- Supports IPv4 and IPv6

### Console Port Management:

- (4) RS232 RJ45 Serial Ports
- (2) USB 2.0 Type A Ports
- Ctrl+Break Command Block Options
- Reverse/Outbound SSH

### Remote Power Management:

- (4) Switchable NEMA 5-15R or IEC C13 Outlets
- Single 15 Amp Power Input
- On/Off/Reboot/Default/Load Shed Switching
- Outlet Sequencing & Power Up Delays
- Scheduled Outlet Switching/Reboot
- Ping Watchdog with Auto Reboot
- 120 VAC and 240 VAC Models

### Event Monitoring, Logging & Notification:

- Temperature, Command & Event Logging
- Time Stamp & Non-Connect Port Buffering
- Power Cycle & Lost Communication Alarms
- Ping-No-Answer Alarm (Failed Ping Command)
- Buffer Monitoring & Alarms
- Over-Temperature Alarms

### DevOps Automation:

- RESTful Web Services API
- Ansible Galaxy Collections Support
- SYSLOG & Streaming Telemetry Support
- WebHook Support (Slack/Splunk/WebEx)
- Zero Touch Provisioning (ZTP) Support

### Unit Management:

- Compatible with WTI NetReach® Centralized Management Software
- CLI & HTML5 Web-Based GUI
- SNMP & Full MIB Support
- FTP/TFTP/SFTP/SCP
- DHCP/DNS/DDNS
- NTP for True Server Sync
- Multiple Concurrent SSHv2 Sessions

### Security & Authentication:

- HTTPS, SSHv2, SNMPv3
- Transport Layer Security (TLS) v1.2, v1.3
- IPSec (Server/Client) & OpenVPN
- IPTables / Static Routes
- Supports Duo, RSA, Okta & Azure Multi-Factor Authentication
- SAN Certificate Support
- AAA: LDAP/Active Directory/Kerberos/RADIUS/TACACS+
- Embedded Validated FIPS 140-2 Cryptographic Module
- Port-Specific Password Protection
- Invalid Access Lockout & Alarm



# REMOTE EDGE MANAGER

## REM SERIES

Model Number	Outlets	Console Ports	AC Voltage 50/60 Hz	Power Dist. (80% Derated)	Input Feeds	Power Cord (Detachable)	Primary/Secondary Ethernet	Cellular
REM-xRx-1-xx	(4) NEMA 5-15R	4 RJ45 / 2 USB	100/120V	1.2/1.4 kW	(1) 15 Amp	C13 to NEMA 5-15P, 8'	10/100/1000	4G LTE
REM-xRx-2-xx	(4) IEC 60320 C13	4 RJ45 / 2 USB	100/240V	1.2/2.8 kW	(1) 15 Amp	(Sold Separately)	10/100/1000	4G LTE

Model Number Key		Sample Model Number: REM 4R4 1 N E			
Series					
REM	Remote Edge Manager				
Ports/Outlets					
4	Console Ports	4	Power Outlets		
Outlet Type					
1	NEMA 5-15R	2	IEC 60320 C13		
Cellular Connectivity					
N	North America (Verizon, AT&T, T-Mobile) Freq. (MHz) 4G: B2(1900), B4(AWS1700), B5(850), B12(700a), B13(700c), B14(700 FirstNet), B66(AWS-3 1700), B71(600) Verizon: B2, B4, B5, B13, B66 ; AT&T: B2, B4, B5, B12, B14, B66 ; T-Mobile: B2, B4, B5, B12, B66, B71 Freq. (MHz) 3G: B2(1900), B4(AWS1700), B5(850)				
North America Cellular Option Requires Additional Part Number: W4G-NAM-REM					
W	World Wide (various carriers) Freq. (MHz) 4G: B1(2100), B3(1800), B7(2600), B8(900), B20(800), B28A(700) Freq. (MHz) 3G: B1(2100), B3(1800), B8(900) Freq. (MHz) 2G: B3(1800), B8(900)				
World Wide Cellular Option Requires Additional Part Number: W4G-EUA-REM					
Ethernet Connectivity					
E	Dual 10/100/1000	blank	Single 10/100/1000		
Dual Ethernet Connectivity Option Requires Additional Part Number: NRR-E-REM					



19" Rack Adapter Brackets (Optional)



Wall Mount Brackets (Optional)



240V IEC Outlet Option

<b>Cellular Connectivity:</b>	4G LTE North America (Verizon, AT&T, T-Mobile) Performance: Category 4; 150 Mbps peak downlink/50 Mbps peak uplink with 3G Fallback World Wide (various carriers) Performance: Category 4; 150 Mbps peak downlink/50 Mbps peak uplink with 3G/2G Fallback
<b>Ethernet Connectivity:</b>	10/100/1000 BaseT, RJ45
<b>Operating Temperature:</b>	32°F - 140°F (0°C - 60°C)
<b>Humidity:</b>	10 - 90% RH
<b>Dimensions:</b>	Height: 1.74" (4.4 cm), 1 Rack U Width: 9" (22.8 cm) Depth: 7.3" (18.5 cm)
<b>Shipping Weight:</b>	5 Lbs (2.26 Kgs)
<b>Mounting Brackets:</b>	Optional Wall Mount Brackets(Part #: NRR-WALL-REM) Optional 19" Rack Brackets(Part #: NRR-19RACK-REM)
<b>Approvals:</b>	UL, cUL, CE, FCC Class A



- 5 Year Warranty
- Stocked for Same Day Shipments
- In-House Design & Manufacturing
- Made In USA



info@wti.com ■ wti.com/edge

WTI - Western Telematic, Inc.  
5 Sterling, Irvine CA 92618 USA  
© Copyright 2025 Western Telematic, Inc. - REM20250105



DOWNLOAD  
SPEC SHEET



WATCH  
THE DEMO