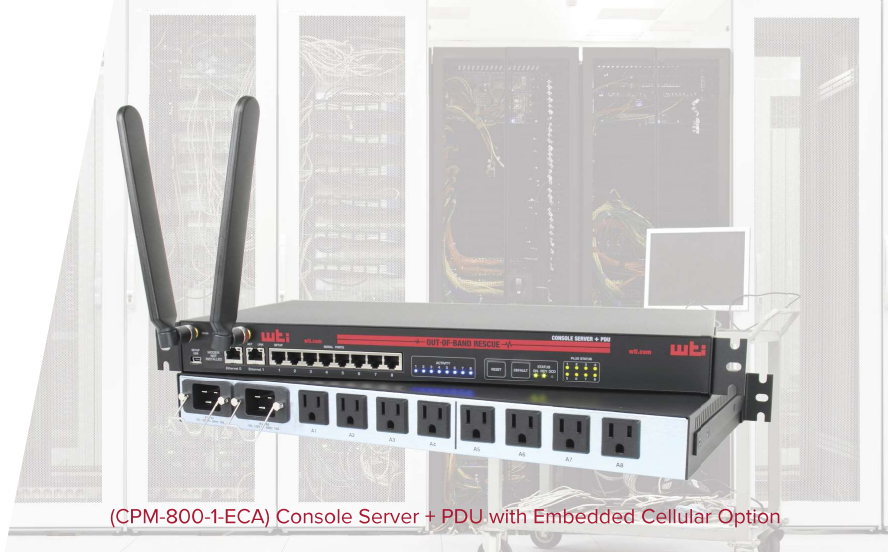




WE HELP THE NET...WORK!

EMBEDDED CELLULAR CONNECTIVITY OPTIONS



(CPM-800-1-ECA) Console Server + PDU with Embedded Cellular Option

Restore Network Services Over Cellular!

Add 4G LTE Service to WTI Out-of-Band Rescue™ Devices

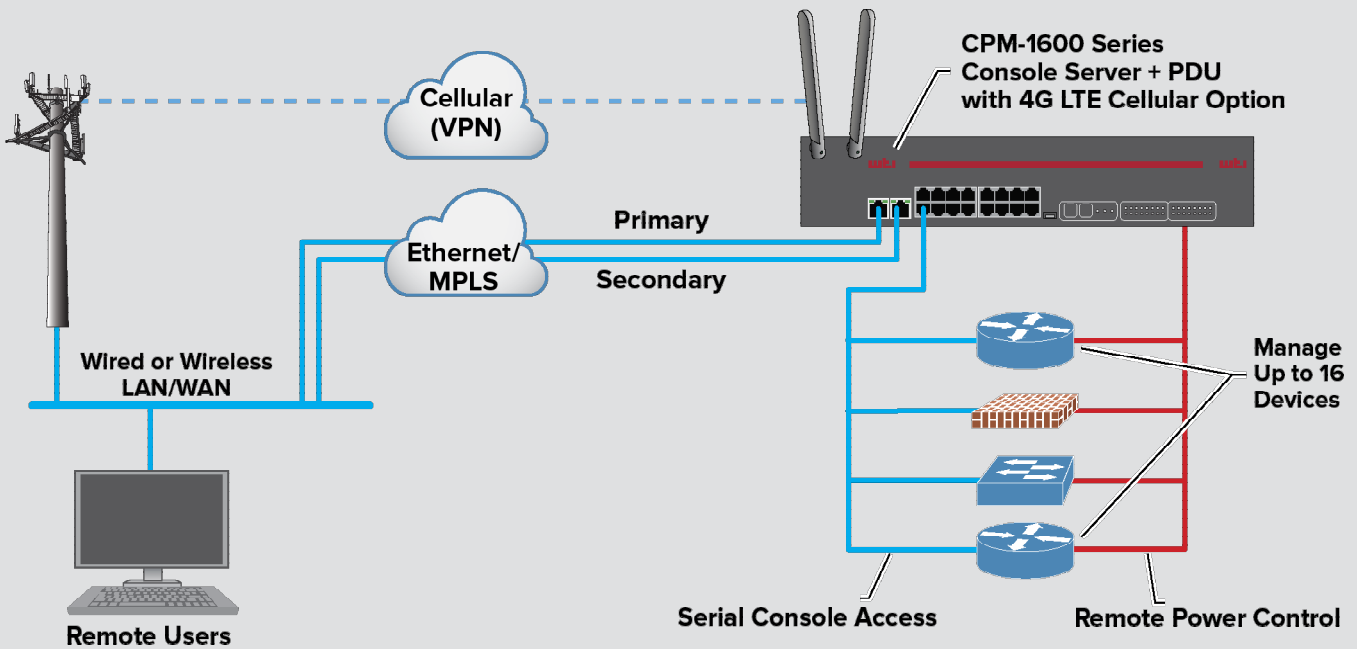
- WAN Failover to Cellular
- Cellular Wake-Up on Failure
- Access Console Ports & Reboot Power

WTI's 4G LTE Cellular options help to eliminate downtime and rapidly troubleshoot errors on your network.

When primary WAN links fail, devices need to be reconfigured over CLI or power must be rebooted, WTI Out-of-Band Rescue devices can backup, troubleshoot and restore your most mission-critical infrastructure over a secure cellular connection.



(W4G-xxx) Embedded Cellular Add-On



Add-On Part Numbers for DSM Console Servers

Part Number	Carrier
W4G-VZW-DSM8	Verizon, AT&T, T-Mobile
W4G-VZW-DSM24	Verizon, AT&T, T-Mobile
W4G-VZW-DSM40	Verizon, AT&T, T-Mobile
W4G-ATT-DSM8	AT&T, Verizon, T-Mobile
W4G-ATT-DSM24	AT&T, Verizon, T-Mobile
W4G-ATT-DSM40	AT&T, Verizon, T-Mobile
W4G-EUA-DSM8	World
W4G-EUA-DSM24	World
W4G-EUA-DSM40	World

Add-On Part Numbers for CPM Console Server + PDUs

Part Number	Carrier
W4G-VZW-CPM8	Verizon, AT&T, T-Mobile
W4G-VZW-CPM16	Verizon, AT&T, T-Mobile
W4G-ATT-CPM8	AT&T, Verizon, T-Mobile
W4G-ATT-CPM16	AT&T, Verizon, T-Mobile
W4G-EUA-CPM-8	World
W4G-EUA-CPM16	World

SIM Specifications:

Carrier: AT&T, Verizon, T-Mobile

SIM Type: Standard SIM (Not Included)

SIM Dimensions: 15mm x 25mm

Frequency Bands (MHz):

4G: B2(1900), B4(AWS1700), B5(850), B12(700a), B13(700c), B66(AWS-3 1700), B71(600)

Verizon: B2, B4, B5, B13, B66

AT&T: B2, B4, B5, B12, B66

T-Mobile: B2, B4, B5, B12, B66, B71

3G: B2(1900), B4(AWS1700), B5(850)

Carrier: World

SIM Type: Standard SIM (Not Included)

SIM Dimensions: 15mm x 25mm

Frequency Bands (MHz):

4G: B1(2100), B3(1800), B7(2600), B8(900), B20(800), B28A(700)

3G: B1(2100), B3(1800), B8(900)

2G: B3(1800), B8(900)

Performance:

4G LTE

North America (Verizon, AT&T, T-Mobile)

Category 4; 150 Mbps peak downlink/50 Mbps peak uplink with 3G Fallback

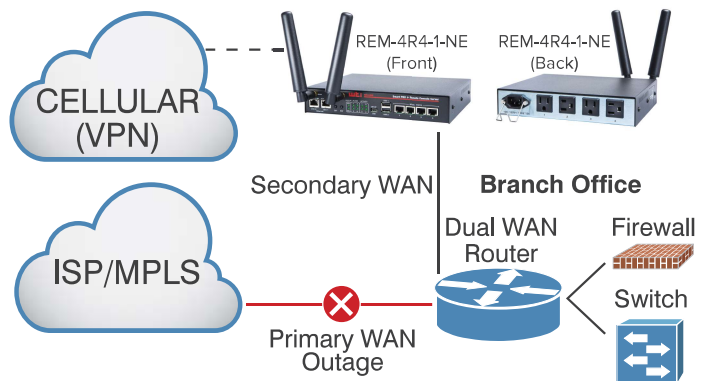
World Wide (various carriers)

Category 4; 150 Mbps peak downlink/50 Mbps peak uplink with 3G/2G Fallback

Cellular 4G LTE Features:

- **No Cell PPP Alarm:** Notifies you when your cellular service provider or cellular modem is down. This allows administrators to deal with cellular link problems promptly, helping to ensure that cellular communication is available during outages.
- **Cellular Wake-Up on Failure:** Allows you to put the W4G LTE Cellular modem into a non-connected sleep state until it is needed. When the WTI device determines that communication with either the primary Ethernet Port or optional secondary Ethernet Port has been interrupted, the Wake-Up on Failure feature will automatically “wake” the cellular modem to allow out-of-band access via cellular.
- **Cellular Failover Using IP Passthrough:** When the Dual Gigabit Ethernet option is present, the cellular failover feature can provide a backup link over 4G LTE. Dual WAN routers can use WTI Out-of-Band Rescue devices as a secondary WAN connection over cellular when the primary link fails.

- 5 Year Warranty
- Stocked for Same Day Shipments
- In-House Design & Manufacturing
- Made In USA



info@wti.com ■ wti.com/cellular

WTI - Western Telematic, Inc.
5 Sterling, Irvine CA 92618 USA

© Copyright 2023 Western Telematic, Inc. - CELL20230501



DOWNLOAD
SPEC SHEET



WATCH
THE DEMO