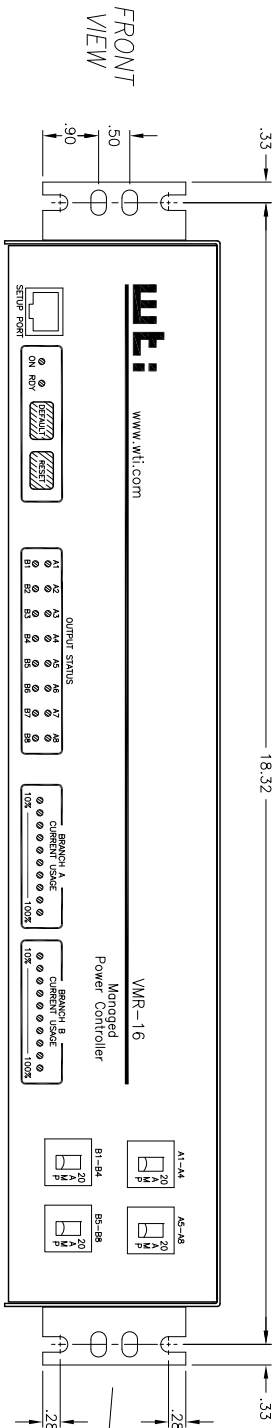
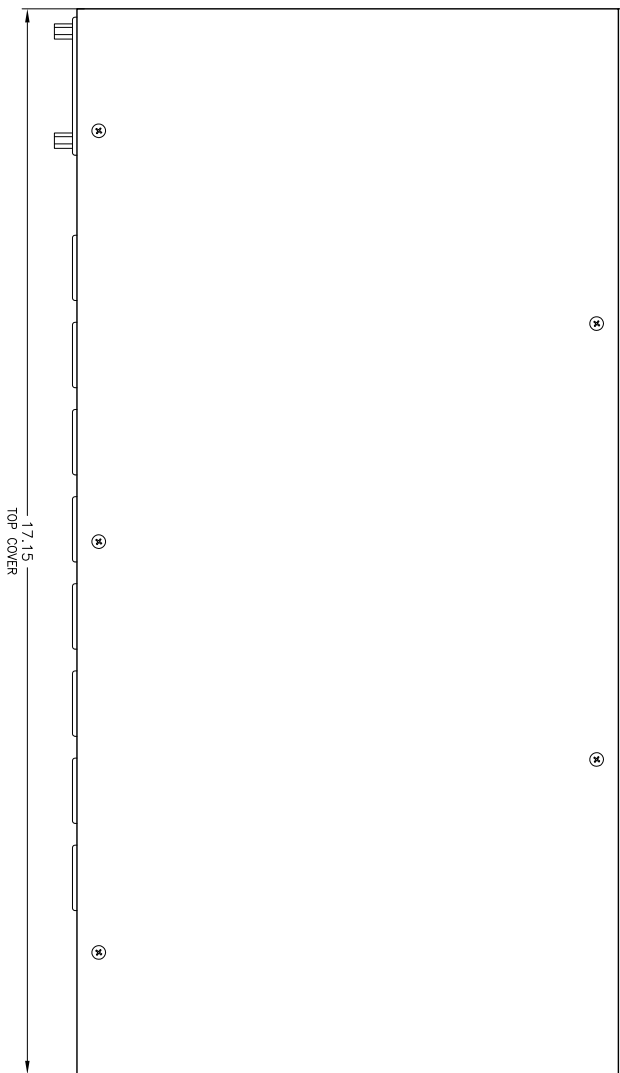


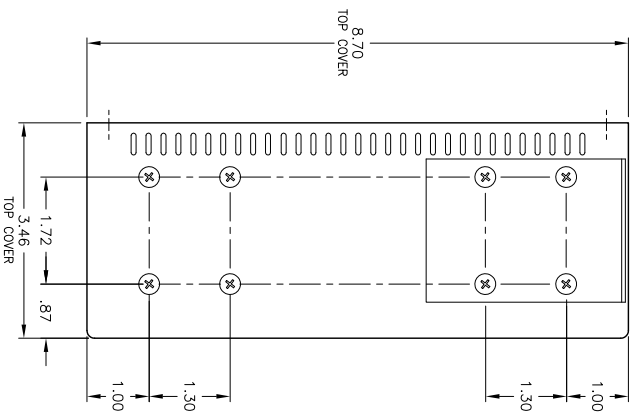
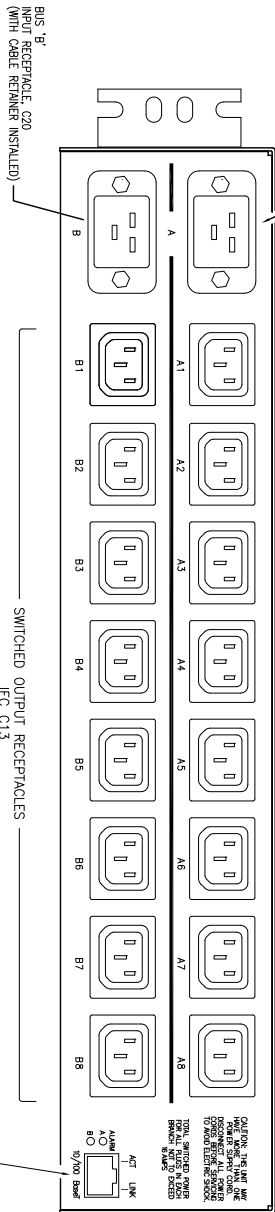
FITS INTO 19" RACK  
18.32"



TOP VIEW



BACK VIEW



THIS DRAWING IS THE PROPERTY OF WESTERN TELEMETRIC INC. IT IS TO BE USED ONLY FOR THE PROJECT AND FOR WHICH IT WAS PREPARED. IT IS NOT TO BE REPRODUCED OR TRANSMITTED IN ANY FORM OR BY ANY MEANS, ELECTRONIC OR MECHANICAL, INCLUDING PHOTOCOPYING, RECORDING, OR BY ANY INFORMATION STORAGE AND RETRIEVAL SYSTEM.

		<b>western telemetric inc.</b> 5 sterling, Irvine ca 92618 VMR-16HD20-2	
DATE ISSUED	1/27/11	REV	1
TEXT ASSEMBLY			
DWG No.	VMR-16HD20-2	REV	A