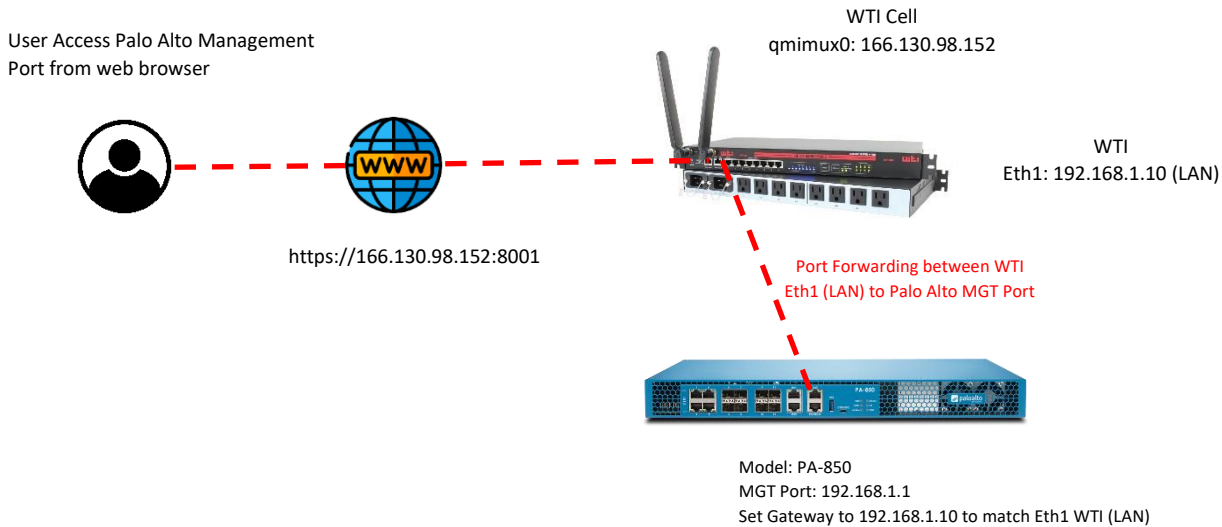


## Cell - Port Forwarding to Palo Alto Management Port



### From WTI Device

Cell (qmimux0): 166.130.98.152  
Eth1: 192.168.1.10 (LAN)

### From Palo Alto Firewall

MGT Port: 192.168.1.1  
Default GW: 192.168.1.10

### Configure IPTABLES from WTI device

From CLI enter /n option 5 and add the following IPTABLES as below.

# Allow traffic from the LAN side

1. **iptables -A INPUT -i eth1 -j ACCEPT**

# Allow established connections

2. **iptables -A INPUT -m state --state ESTABLISHED,RELATED -j ACCEPT**

# Masquerade.

3. **iptables -t nat -A POSTROUTING -o eth1 -j MASQUERADE**

# forwarding

4. **iptables -A FORWARD -i eth1 -o qmimux0 -m state --state RELATED,ESTABLISHED -j ACCEPT**

# Allow outgoing connections from the LAN side.

5. **iptables -A FORWARD -i qmimux0 -o eth1 -j ACCEPT**

6. **iptables -t nat -A PREROUTING -p tcp -i qmimux0 --dport 8001 -j DNAT --to-destination 192.168.1.1:443**

7. **iptables -A FORWARD -p tcp -d 192.168.1.1 --dport 443 -m state --state NEW,ESTABLISHED,RELATED -j ACCEPT**

## From Palo Alto Firewall

To Set Default Gateway

From Palo Alto Firewall go to Device >> Interfaces >> Management and set Default Gateway as WTI Eth1 (LAN).

The screenshot shows the 'Management Interface Settings' configuration window. The 'IP Type' is set to 'Static'. The 'IP Address' is 192.168.1.1, the 'Netmask' is 255.255.255.0, and the 'Default Gateway' is 192.168.1.10, which is highlighted with a red box. Other settings include 'IPv6 Address/Prefix Length', 'Default IPv6 Gateway', 'Speed' set to 'auto-negotiate', and 'MTU' set to 1500. Under 'Administrative Management Services', 'HTTP' and 'Telnet' are unchecked, while 'HTTPS' and 'SSH' are checked. Under 'Network Services', 'HTTP OCSP', 'SNMP', and 'User-ID Syslog Listener-SSL' are unchecked, while 'Ping' is checked and 'User-ID' and 'User-ID Syslog Listener-UDP' are unchecked. A table for 'Permitted IP Addresses' is empty. At the bottom, there are 'Add' and 'Delete' buttons, and 'OK' and 'Cancel' buttons.

Now go to web browser as <https://166.130.98.152:8001> and enter username/password of Palo Alto.

The screenshot shows a web browser window displaying the Palo Alto Networks login page. The URL in the address bar is <https://166.130.98.152:8001/php/login.php>. The page features the Palo Alto Networks logo and a login form with fields for 'Username' and 'Password', and a 'Log In' button.