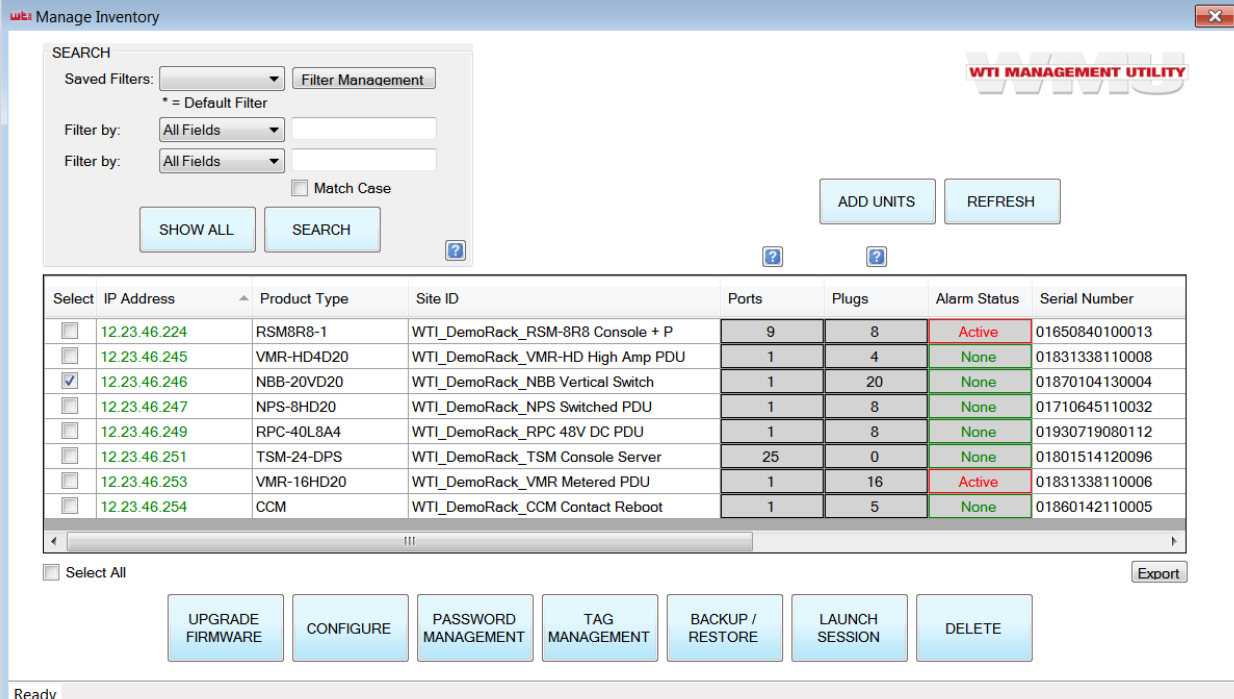


### Backing Up Your Parameters Using The WMU.

When using the WMU to back up your parameters select the unit you want to back up from your inventory:



WTI MANAGEMENT UTILITY

SEARCH

Saved Filters:  Filter Management

\* = Default Filter

Filter by: All Fields

Filter by: All Fields

Match Case

SHOW ALL SEARCH

ADD UNITS REFRESH

Select	IP Address	Product Type	Site ID	Ports	Plugs	Alarm Status	Serial Number
<input type="checkbox"/>	12.23.46.224	RSM8R8-1	WTI_DemoRack_RSM-8R8 Console + P	9	8	Active	01650840100013
<input type="checkbox"/>	12.23.46.245	VMR-HD4D20	WTI_DemoRack_VMR-HD High Amp PDU	1	4	None	01831338110008
<input checked="" type="checkbox"/>	12.23.46.246	NBB-20VD20	WTI_DemoRack_NBB Vertical Switch	1	20	None	01870104130004
<input type="checkbox"/>	12.23.46.247	NPS-8HD20	WTI_DemoRack_NPS Switched PDU	1	8	None	01710645110032
<input type="checkbox"/>	12.23.46.249	RPC-40L8A4	WTI_DemoRack_RPC 48V DC PDU	1	8	None	01930719080112
<input type="checkbox"/>	12.23.46.251	TSM-24-DPS	WTI_DemoRack_TSM Console Server	25	0	None	01801514120096
<input type="checkbox"/>	12.23.46.253	VMR-16HD20	WTI_DemoRack_VMR Metered PDU	1	16	Active	01831338110006
<input type="checkbox"/>	12.23.46.254	CCM	WTI_DemoRack_CCM Contact Reboot	1	5	None	01860142110005

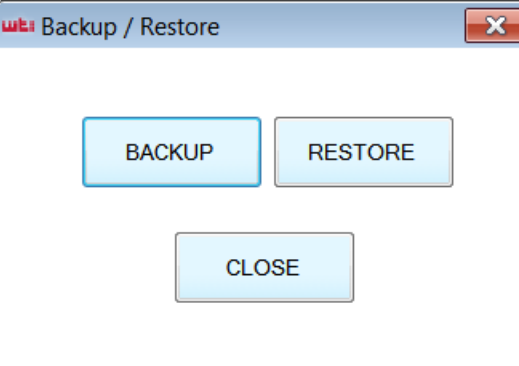
Select All Export

UPGRADE FIRMWARE CONFIGURE PASSWORD MANAGEMENT TAG MANAGEMENT BACKUP / RESTORE LAUNCH SESSION DELETE

Ready

Next select the Backup/Restore tab.

After that selection has been made a new menu will appear with an option to select backup or restore.

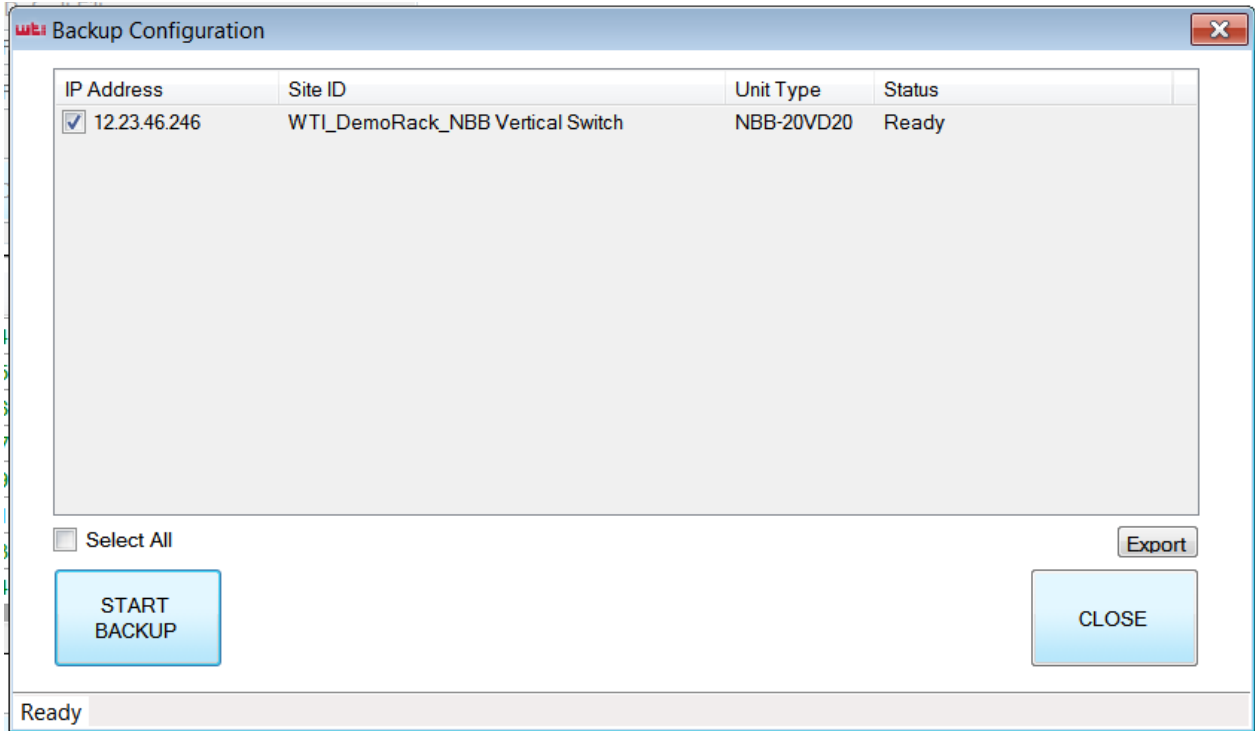


WTI Backup / Restore

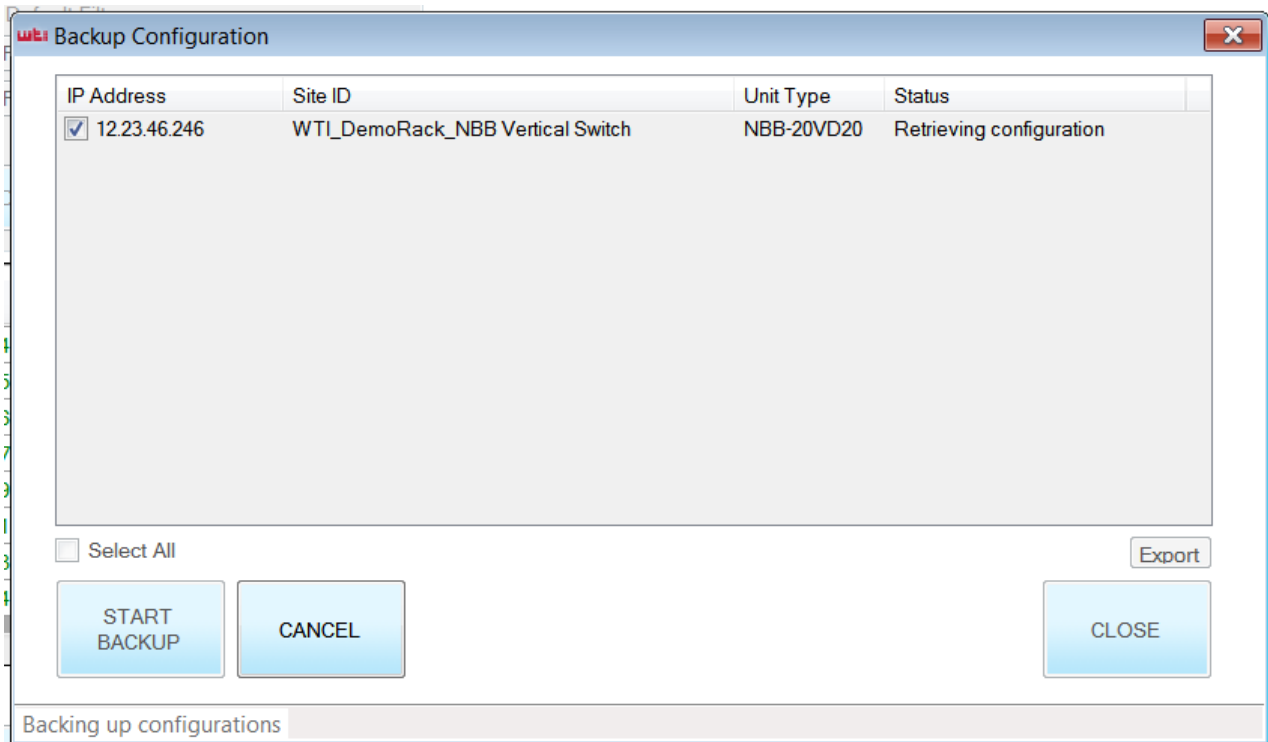
BACKUP RESTORE

CLOSE

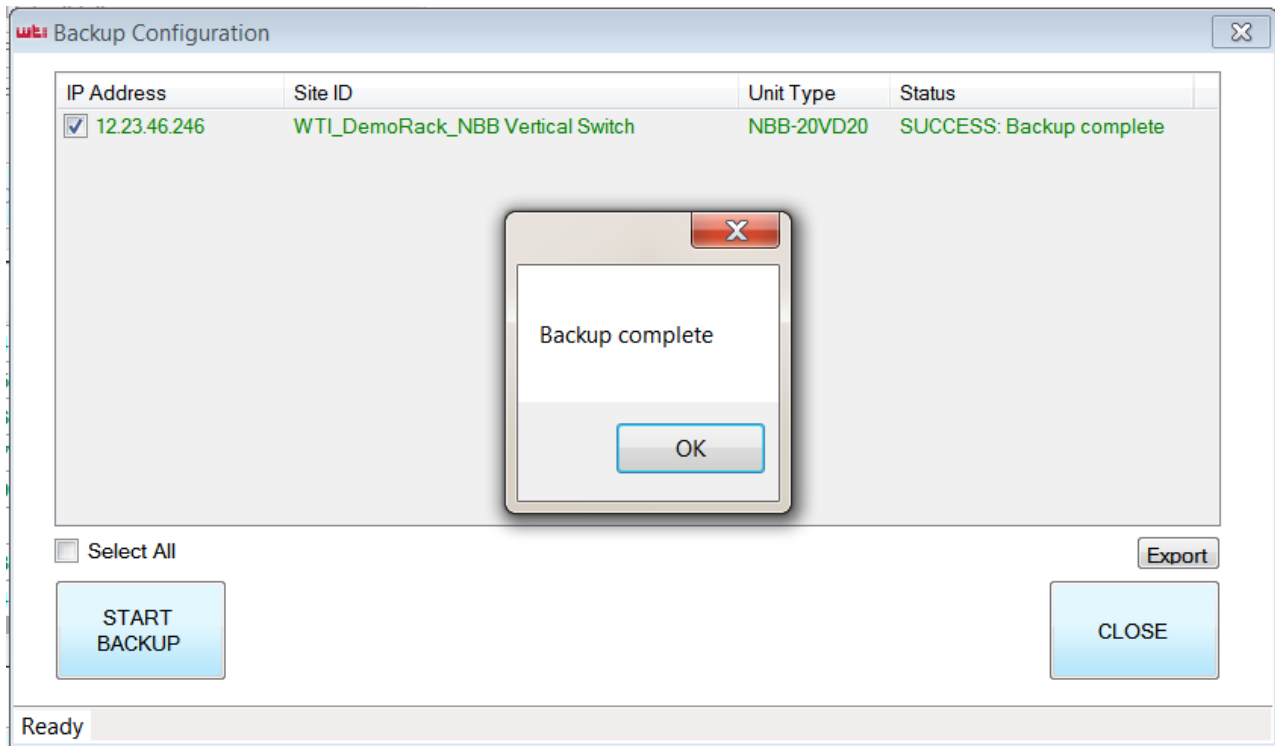
Select the Backup option.



A new window will appear with the premade selection for the unit to back up already checked. Select the button that says start backup.



After it has finished backing up the unit you will receive a notification saying "Backup complete"



**Restoring Previously Backed Up Parameters Using The WMU:**

Select the Backup / Restore tab.

When using the WMU to back up your parameters select the unit you want to restore from your inventory:

The screenshot shows the 'Manage Inventory' window of the WTI Management Utility. It features a search filter section at the top left with 'Saved Filters', 'Filter by' dropdowns, and 'SHOW ALL' and 'SEARCH' buttons. A table of units is displayed below, with columns for 'Select', 'IP Address', 'Product Type', 'Site ID', 'Ports', 'Plugs', 'Alarm Status', and 'Serial Number'. The unit with IP 12.23.46.246 is selected. Below the table are buttons for 'UPGRADE FIRMWARE', 'CONFIGURE', 'PASSWORD MANAGEMENT', 'TAG MANAGEMENT', 'BACKUP / RESTORE', 'LAUNCH SESSION', and 'DELETE'. The 'BACKUP / RESTORE' button is highlighted.

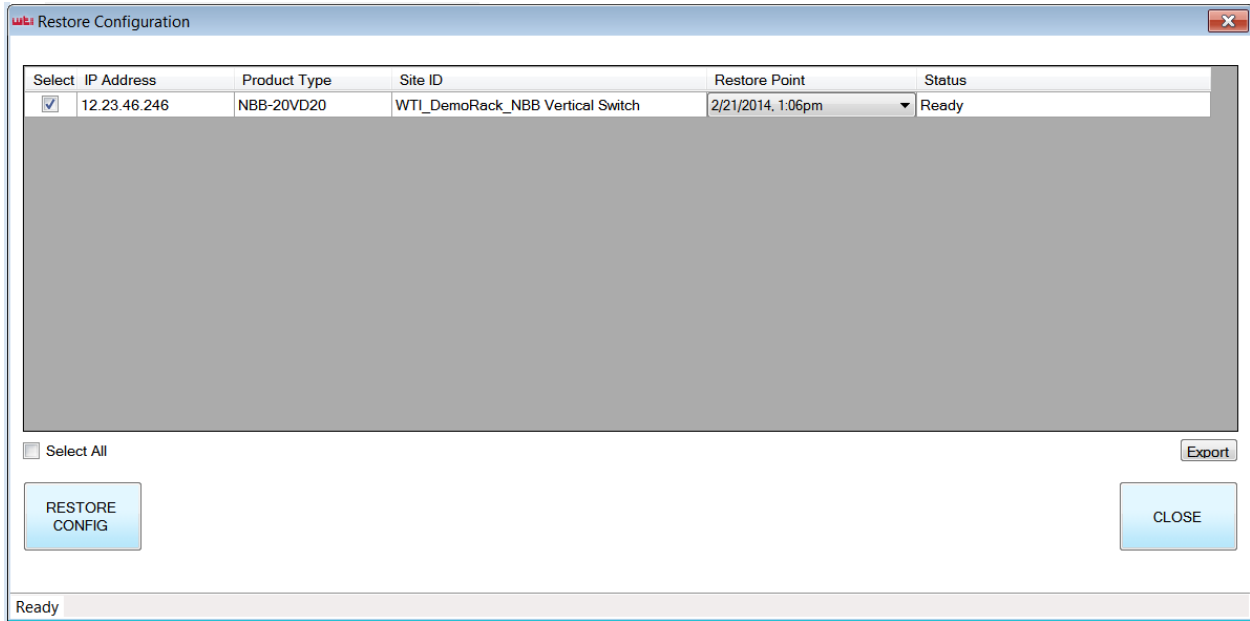
Select	IP Address	Product Type	Site ID	Ports	Plugs	Alarm Status	Serial Number
<input type="checkbox"/>	12.23.46.224	RSM8R8-1	WTI_DemoRack_RSM-8R8 Console + P	9	8	Active	01650840100013
<input type="checkbox"/>	12.23.46.245	VMR-HD4D20	WTI_DemoRack_VMR-HD High Amp PDU	1	4	None	01831338110008
<input checked="" type="checkbox"/>	12.23.46.246	NBB-20VD20	WTI_DemoRack_NBB Vertical Switch	1	20	None	01870104130004
<input type="checkbox"/>	12.23.46.247	NPS-8HD20	WTI_DemoRack_NPS Switched PDU	1	8	None	01710645110032
<input type="checkbox"/>	12.23.46.249	RPC-40L8A4	WTI_DemoRack_RPC 48V DC PDU	1	8	None	01930719080112
<input type="checkbox"/>	12.23.46.251	TSM-24-DPS	WTI_DemoRack_TSM Console Server	25	0	None	01801514120096
<input type="checkbox"/>	12.23.46.253	VMR-16HD20	WTI_DemoRack_VMR Metered PDU	1	16	Active	01831338110006
<input type="checkbox"/>	12.23.46.254	CCM	WTI_DemoRack_CCM Contact Reboot	1	5	None	01860142110005

Next select the Backup/Restore tab.

After that selection has been made a new menu will appear with an option to select backup or restore.

The screenshot shows the 'Backup / Restore' dialog box. It contains three buttons: 'BACKUP', 'RESTORE', and 'CLOSE'.

Select the restore option.



Under the restore point tab a drop down list will appear with the times and dates of when the backups were created. Select the desired backup to load and click the restore config button.