

DIRECTIONS FOR SAVING & UPLOADING PARAMETERS USING TERA TERM (TELNET, SSH, SERIAL)

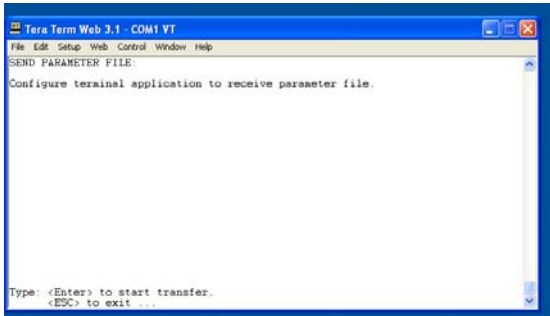
Login to the unit as an administrator:

login: super

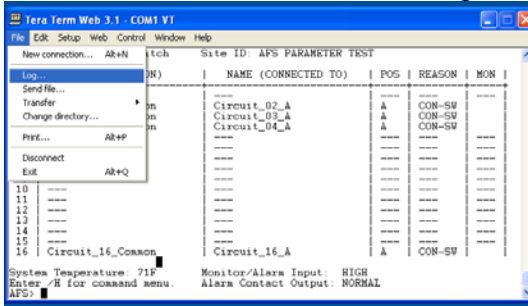
Password: *****

At the AFS prompt type “/u” then hit enter.

AFS> /u



In the Tera Term menu select log.

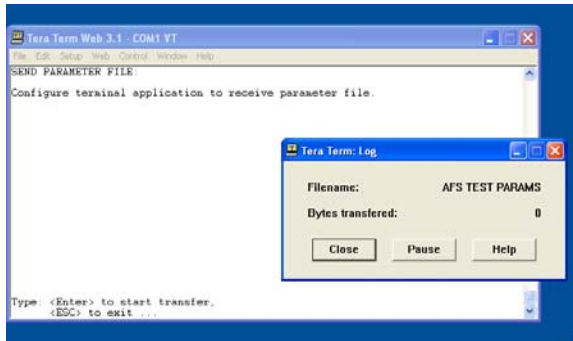


Chose a name for your parameter file then check the Binary and Append box.

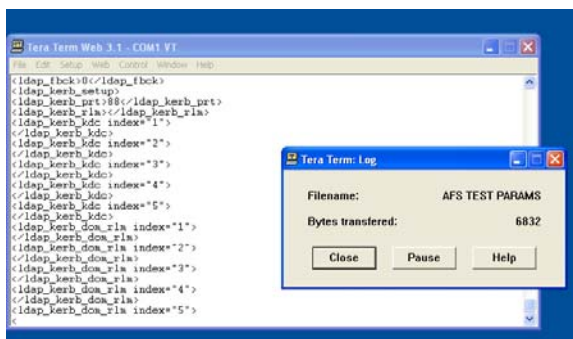


Click Open.

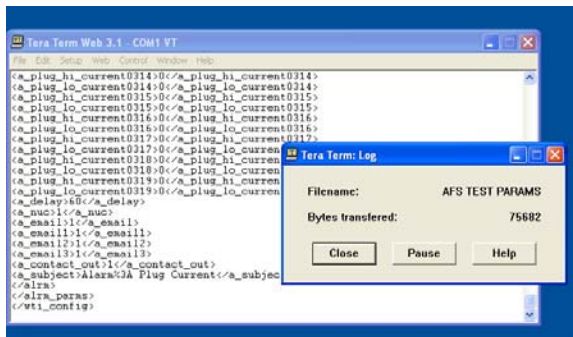
DIRECTIONS FOR SAVING & UPLOADING PARAMETERS USING TERA TERM (TELNET, SSH, SERIAL)



Hit enter on your keyboard to start transfer.



When the unit is done dumping the parameters onto your screen, select close.



Open the file and verify that the first line is:

<wti_config>

And the last line is:

</wti_config>

You have successfully saved your parameters.

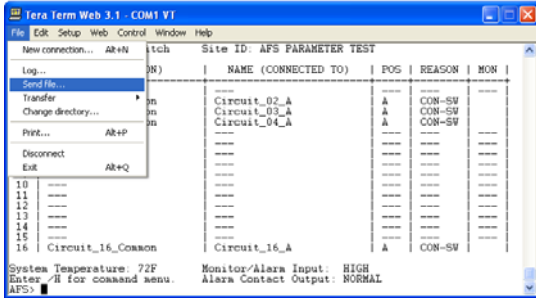
DIRECTIONS FOR SAVING & UPLOADING PARAMETERS USING TERA TERM (TELNET, SSH, SERIAL)

To upload parameters login to the unit as an administrator:

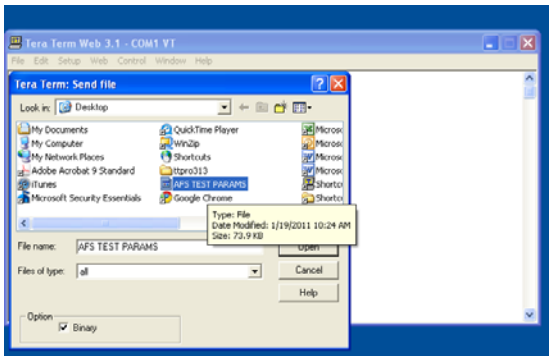
login: super

Password: *****

From the file menu select send file



Chose the appropriate file and make sure binary is checked,



After the unit has finished processing the file you should see the following messages appear:

Processing XML configuration, please wait...

Processing XML configuration Complete!

All users will be logged out please re-login